

Modelling the Acceptance and Use of Electronic Medical Records from Patients' Point of View: Evidence from Saudi Arabia

Dalal Bamufleh¹

¹ Management Science Department -Management Information Systems (MIS) Yanbu University College, Saudi Arabia

Correspondence: Dalal Bamufleh, Management Science Department, Yanbu University College, Yanbu, Saudi Arabia. E-mail: bamuflehd@rcyci.edu.sa

Received: April 6, 2021

Accepted: May 7, 2021

Online Published: May 19, 2021

doi:10.5539/ijbm.v16n7p12

URL: <https://doi.org/10.5539/ijbm.v16n7p12>

Abstract

Background: The employment of IT in healthcare reflects a need to meet the increasing demands of patients and to upgrade the quality and productivity of the provided services. However, the literature demonstrates many failures in systems and IT technology implementation. One of the reasons behind these failures is users' resistance. The ministry of health (MOH) in Saudi Arabia (SA) has prioritized the embracing of new technologies that could improve the healthcare services, such as electronic medical record (EMR) systems. On the other hand, studies that address the acceptance and use of hospital information systems (HIS) and EMRs in SA from patients' standpoint are scarce. The aim of this study was to explore patients' acceptance of an EMR system by proposing a model adapted from the technology acceptance model (TAM) and the unified theory of acceptance and use of technology (UTAUT).

Methods: An online questionnaire was used where questions were based on the proposed model constructs (facilitating conditions (FC), perceived ease of use (PEOU), perceived usefulness (PU), attitude (ATT), and behavioral intention (BI)). 116 patients responded to the questionnaire. The model was then tested to identify the factors that affect patients' intention to use the online services of the EMR.

Results: The analysis of the research model suggested that (1) FCs influenced the degree of system's PEOU. (2) PEOU affected the EMR's PU. (3) PU affected patients' ATT toward using the EMR. (4) A positive effect is found between ATT and BI to use EMR.

Conclusion: The study has implications for healthcare IT acceptance research and efforts in SA, as to date patients' perspectives have received little attention. The research also makes a theoretical contribution as it validated the proposed model.

Keywords: EMR, HIS, TAM, UTAUT

1. Introduction

The current utilization of information technology in healthcare stems from a need to deliver better healthcare and to meet patients' growing demands. Patients' demands have changed, and their expectations have increased, which requires upgrading the healthcare industry to meet such expectations. Primary patients' expectations include the 24/7 availability of medical services, accessibility to their electronic medical records (EMRs), effective and reliable online appointment systems, and reduced patient waiting times in doctors' offices (Meyers, 2003). One solution to overcome healthcare service issues in meeting patients' demand is to utilize information and communication technologies (ICT). ICT integration into the healthcare sector enables and facilitates the redesign of healthcare services in a way that satisfies patients' increasing demands (Lee et al., 2011). The implementation of IT/ICT in the healthcare context can be in one or more of the following forms: EMRs, electronic health records (EHRs), computerized physician order entry, clinical decision support systems (CDSS), mobile healthcare systems, and picture archiving and communication system (PACS) (Ahlan & Ahmad, 2014; Aldosari, 2012; Aljarboa et al., 2019; Alsulame et al., 2016).

According to Lee et al. (2011), the hospital information system (HIS) is one of the primary forms of ICT integration in healthcare. A HIS is defined as "a comprehensive, integrated information system designed to manage the administrative, financial and clinical aspects of a hospital. It aims to achieve the best possible support of patient

care and administration by electronic data processing” (Ismail et al., 2010, p. 16-24). A HIS can also be defined as “an information system that performs the function of processing data, information and knowledge in the secondary and tertiary healthcare levels” (Lee et al., 2011, p. 2129–2140). A HIS supports hospitals’ management in making the right decisions by providing the needed information at the right time. It empowers hospitals to access, evaluate, and extract insights from healthcare data, which contribute to patient care and overall quality improvement (Ismail et al., 2010). The predictable core benefits for implementing HISs are quality improvement for healthcare services, price reduction, and reduction of medical errors (Fraser et al., 2005). In developing countries, HIS implementation provides an exceptional opportunity to leverage the quality of healthcare services, decrease healthcare costs, and improve productivity and resource utilization (Williams & Boren, 2008).

According to Gell & Gitter (2008), a HIS performs five key functions:

1. Clinical order entry. This function involves organizing and managing all medical services that a patient needs, such as examinations, admission and surgery appointments, and medical counseling. It is considered as the most crucial function of any HIS.
2. Scheduling. Because HIS is an integrated information system, it synchronizes all medical information in a timely and systematic manner in order to shorten patients’ waiting time and enhance the quality of healthcare services.
3. Electronic patient record/electronic medical record. This refers to the electronic collection of patient information during any interaction between that individual and the hospital. This includes patient medical history, examination results, clinic visit details, and billing information. Patients’ records are stored in a much-secured way, so only authorized people can access, retrieve, and review them.
4. Structured reporting. As mentioned above, a HIS supports management in making decisions; it is an interactive reporting tool that replaces traditional paper reports. By using a database, the system is also capable of providing a visual presentation and illustration of data.
5. Process management. In addition to the benefits a HIS provides to improve medical services to patients, it helps in organizing and managing the administrative and business processes to deliver such services. A HIS provides the workload along with the required activities for each user according to his or her role. Also, a HIS shows the necessary procedures and steps required to deliver patient treatment.

One of the HIS elements that has received significant attention in HIS research is EMRs/EHRs. These are defined as “a longitudinal electronic record of patient health information generated by one or more encounters in any care delivery setting. Included in this information are patient demographics, progress notes, problems, medications, vital signs, past medical history, immunizations, laboratory data, and radiology reports. The EHR automates and streamlines the clinician’s workflow. The EHR has the ability to generate a complete record of a clinical patient encounter—as well as supporting other care-related activities directly or indirectly via interface—including evidence-based decision support, quality management, and outcomes reporting” (HIMSS, n.d.). EHR systems enable hospitals to save and safeguard patients’ current and historical information, and to provide patients with greater accessibility to their digital records through an online platform or mobile applications (Holden & Karsh, 2010) (Table 1).

2. Literature Review

Due to the effective role of EMR systems in upgrading and enhancing health services quality, EMRs are considered as the core element of HIS and the healthcare infrastructure (Al-Sobhi et al., 2011; Chaudhry et al., 2006). A research study for identifying the benefits of implementing and using HISs and EMRs was conducted in four Saudi hospitals that fully employed these technologies. The study targeted doctors, nurses, technicians, and administrative staff who have experienced using HISs and EMRs. The study revealed the following 10 perceived benefits and advantages for implanting a HIS and EMR, ranked in descending order: “1) Improved information access, 2) Increased healthcare professionals productivity, 3) Improved efficiency and accuracy of coding and billing, 4) Improved quality of healthcare, 5) Improved clinical management (diagnosis and treatment), 6) Reduced expenses associated with paper medical records, 7) Reduced medical errors, 8) Improved patient safety, 9) Improved patient outcomes and 10) Improved patient satisfaction” (Khalifa, 2017). According to Bozaykut et al. (2016), there is high adoption and implementation of HISs in developed countries, which in return results in quality improvement in healthcare delivery and reduction in medical errors. At the same time, because of some challenges and barriers, the healthcare industry is progressing slowly in healthcare technology and HIS adoption and implementation (Anastassopoulos et al., 2012; Menachemi et al., 2004).

The ICT adoption and technology acceptance literature classifies the adoption challenges into three classes:

organizational challenge/organizational characteristics, human challenge/individual characteristics, and technological challenge/technological characteristics (Hu et al., 1999; Zakaria et al., 2010). In particular, the employment of such systems in developing countries involves numerous challenges and is still at the early stages (Alsharo et al., 2019). These challenges are mentioned in the literature around HIS adoption in developing countries and are mainly categorized into three categories: economic, such as high costs and limited and insufficient financing; technical, such as poor or inadequate infrastructure; and political challenges like wars and immigrants. Also, developing countries suffer from healthcare professionals' scarcity and limited access to advanced technologies (Ahlan & Ahmad, 2014; Fraser et al., 2005). In fact, the extent of these challenges' effect on HIS implementation varies from one developing country to another, as they maintain different resources, populations, and market sizes (Ahlan & Ahmad, 2014).

A study conducted by Almainan et al. (2014) aimed to explore health information technology (HIT) implementation and to identify the main associated challenges with using electronic health applications (eHealth) in primary healthcare centers (PHCCs) in the Kingdom of Saudi Arabia. The data for the study was collected through academic search and interviewing IT personnel working in the National Guards for Health Affairs and the Ministry of Health and primary healthcare directors. The sample covered five areas of the kingdom: Riyadh, Hail, Arar, Rafha, and Najran. The findings showed that HIT adoption and use is growing in Saudi Arabia (SA), but it still is in its early stage. HISs at PHCCs in SA contributed to some advantages, such as lowering the "no-show rate" for patients who had booked appointments and improving service quality. The majority of PHCCs in SA maintain the basic required infrastructure for ICT and have the needed IT resources that include intranet and database resources. Despite this, the utilization of HISs and electronic health applications is below the potential use; for example, most services used through HISs at PHCCs in SA are booking appointments and updating users' information. This low utilization is due to reasons such as system failure, difficulty in using and navigating the online system, negative attitudes toward using the systems, and work overload (Almainan et al., 2014).

Additionally, the study identified two critical challenges for HIS implementation in PHCCs. First, the distribution, implementation, and utilization of HISs varies between PHCCs located in cities and rural areas. Second, the majority of PHCCs in SA use EMRs along with paper-based medical records, which affects the quality of data (Almainan et al., 2014). The same challenges were reported in another study on EMR use in SA (Al-Sobhi et al., 2011). Additionally, EMR implementation in SA has been met with further barriers such as policies, organizations' technical infrastructure, users' resistance to change, training, and costs. One study targeted 185 nurses across three public hospitals where the same EHR was implemented in the Eastern Province of SA; the study revealed some barriers in using the EHR system (ordered from most to least frequently cited): "loss of access to medical records transiently if computer crashes or power fails," "lack of continuous training/support from IT staff in the hospital," "additional time required for data entry (i.e., more workload)," "system hanging up problem," "complexity of technology," and "lack of customizability of the system according to users' needs" (El Mahalli, 2015).

Similarly, another study targeted 19 governmental hospitals located in the Eastern Province of SA that identified some challenges in EHR system implementation. These challenges were centered on doctors' and nurses' resistance and lack of seriousness in inserting the needed inputs to use system functions such as patient prescriptions, progress notes, and patient diagnoses (Bah et al., 2011). Furthermore, the confidentiality of patient information presents a considerable challenge for medical institutions in SA. Organizations that fail to keep patient information secure are subject to disciplinary actions from the Saudi Ministry of Health. Electronic medical services provided in Saudi hospitals are not unified and combined at the local or national levels, which results in data quality problems such as duplication, inconsistency, missing data, and inaccuracy. Such issues threaten data security and increase healthcare costs (Almainan et al., 2014).

HIS implementation is a growing trend in developed countries, and many developing countries, including SA, are moving toward establishing and adopting one or more forms of HIS (Alsharo et al., 2019; El Mahalli, 2015). In spite of the benefits HISs provide to healthcare institutes in the developing countries, it doesn't assure users' adoption and acceptance (Esmailzadeh et al., 2015). At the same time, the HIS adoption literature shows that more than 50% of health information systems are not used because of factors such as the extensive time needed for digitizing patients' records, checking and evaluating HIS decisions, and users' refusal or resistance (Kilsdonk et al., 2010). The usefulness of any great technology can be measured by the number of uses and its employment in achieving its purposes. Thus, various technological barriers appear when users start interacting with the technology. Some of these barriers are issues relating to ease of use, usefulness, complexity, usability, output quality, compatibility, and observability. These technological challenges are studied through human-computer interaction. Also, user acceptance plays a major role in the successful adoption of healthcare IT solutions and systems (Aldosari, 2012; Alsharo et al., 2019). For these reasons, studying users' behavior toward using and

accepting the system can improve the system implementation and performance (Kilsdonk et al., 2010). The HIS adoption literature shows that many HIS implementations fail as a result of users' resistance or rejection (Kijisanayotin et al., 2009; Spetz et al., 2014). Consequently, exploring the factors that impact the users' adoption is significant to overcome the implementation challenges that may hinder the system success (Cresswell et al., 2013). Based on that, this study aims to explore patients' perceptions of the adoption of the online services of an EMR system.

User behavior toward new technology can be illustrated and expected by some theories and models such as the theory of reasoned action (Fishbein & Ajzen &, 1975), the technology acceptance model (TAM) (Davis, 1989), the motivational model (Davis, 1989), the theory of planned behavior (Ajzen, 1991), a combined TAM and TPB (Taylor & Todd, 1995), diffusion of innovation theory (Moore & Benbasat, 1991; Rogers, 1962; Rogers, 2010), and the Unified Theory of Acceptance and Use of Technology (UTAUT) (Venkatesh et al., 2003).

In the context of HIS adoption and acceptance in SA, Mohamed & El-Naif (2005) conducted a quantitative study in a military hospital in Riyadh to explore opinions and perceptions on the implementation of an EMR system. The sample included 105 physicians, 109 nurses, and 120 patients, who were surveyed on the current medical records department (MRD) and the quality of MRD services. However, only physicians were surveyed concerning EMRs. The study revealed that physicians at the time of the study had negative perceptions toward conversion from the current paper-based MRD to an EMR system. Only 31.3% of physicians believed it was time to move to EMRs, 68.7% believed that the existing MRD was more credible than EMRs, and more than 90% of the hospital physicians believed EMRs would add a burden on them, as EMRs require significant data entry from their side. Also, more than 80% of the sample physicians believed EMRs would decrease their productivity.

Another quantitative study by Bah et al. (2011) was conducted to measure EHR system adoption across the governmental hospitals located in the Eastern Province of SA. The study targeted the hospitals' IT managers. Out of 19 hospitals, only three hospitals used the same EHR system. The implemented system provides five main functionalities: chart review, decision support, order entry, documentation, and additional tools. For chart review functions, the system can obtain and review lab and radiology results, review progress notes, and monitor current and past medications and medication refills. The decision support functions of the system include receiving drug interaction and drug-allergy alerts when writing prescriptions, and highlighting test results that are out of normal range. Order entry functions enable the hospital staff to enter the lab, radiology, and pharmacy orders. Also, the EHR systems have some documentation functions that involve the systems' ability to create and maintain patient-related medical problem lists and common medication lists, identify patient-specific allergies, and document patient discharge instructions. Finally, the additional tools of the systems include managing patient referrals, automating coding of disease conditions, generating health statistics, and performing data backup and disaster recovery (Bah et al., 2011).

The Ministry of Health in SA has set many standards and policies for electronic health services to ensure effective and reliable implementation (Alkabba et al., 2012). Yet Alkabba and colleagues highlighted that the implemented systems were not capable of or not utilized to perform the following functionalities: creation and reviewing of scanned documents, communications, allowing hospitals' physicians to access patient records over the Internet when they are outside the hospital, and allowing patients to access their health records over the Internet (Bah et al., 2011). A similar study was carried about by Aldosari (2014) to examine the status of the EHR system in Riyadh as a sample of SA. Riyadh has a total of 30 hospitals; of these, 22 (16 governmental and 6 private) were surveyed to determine the rate, level, and determinants of EHR adoption. The study targeted project managers, medical directors, heads of IT departments, and EHR development teams. A total of 280 respondents completed the survey across all hospitals. The study found that for the rate of EHR adoption in Riyadh, of 22 hospitals, 19 had fully or partially adopted an EHR system. Of the hospitals included in the sample, 50% (11 hospitals) had implemented a fully functional EHR system, 36% (8 hospitals) were in the process of implementing an EHR system, and 14% (3 hospitals) had not yet implemented a system.

Unlike the Eastern Province of SA (Bah et al., 2011), the 19 adopted hospitals implemented different EHR systems. Regarding the EHR system adoption level, three adoption phases were considered: implementation, maintenance, and improvement. For the implementation phase, the study found there was low preparation for the needed actions for the conversion from the current paper-based record system to an electronic one. For the maintenance phase, the major weakness was centered on software updates and maintaining and updating the CDSS. Concerning the improvement phase of EHR adoption, HIS communication and sharing is the main issue (Aldosari, 2014). With respect to EHR system adoption determinants, the study examined three primary determinants: hospital size, hospital ownership, and the EHR system development team. First, hospital size was reported to be positively related to the level of care complexity. Larger and tertiary hospitals had advanced EHR adoption. For the hospital

ownership (public or private), the study findings showed that public hospitals were more advanced in the system implementation and maintenance phases than were private hospitals, which had better performance in the system improvement phase (Aldosari, 2014).

Additionally, a study on EHR adoption and barriers from nurses' perspective was conducted by El Mahalli (2015), which targeted 185 nurses in three public hospitals where the same EHR systems were implemented in the Eastern Province of SA. The applied systems provided some functionalities analogous to the ones in the study by Bah et al. (2011). The study revealed the underutilization of all EHR functionalities across the three hospitals. Also, similar to the findings of Bah et al. (2011), there was no utilization of any communication features; there were zero instances of using tools that "[allowed] patients to use the Internet to access parts of their health records" (El Mahalli, 2015).

For other forms of HISs, a study carried by Aldosari (2012) investigated radiology users' acceptance of a PACS in the radiology department at King Abdulaziz Medical City hospital in Riyadh, SA. The study used a modified TAM that contained three constructs: perceived usefulness (PU), perceived ease of use (PEOU), and change. In addition, a survey was conducted to validate the proposed model, and the targeted population (89 respondents) was radiology staff: consultants, radiologists, residents, technologists, and others who used the PACS in their work in the radiology department. The study concluded that all constructs in the proposed model (i.e., PU, PEOU, and change) had a significant effect on radiology staff acceptance and the use of the PACS (Aldosari, 2012).

A recent study carried by Aljarboa et al. (2019) aimed to explore the factors of CDSS adoption in the context of the Saudi healthcare sector and to identify the possible use challenges of such technology. CDSS is a computerized mechanism that "provides clinicians with knowledge, intelligently filtered or presented at appropriate times, to enhance health and healthcare, and can be seen as an effective pathway to improve patient safety, providing, for instance, alerts for error reduction" (Zikos & Delellis, 2018). The study targeted nine physicians from various specializations at different public and private hospitals and used qualified semi-structured interviews and applied some modifications to the UTAUT model constructs to fit both the healthcare and SA contexts. Two constructs were added to UTAUT: diagnostic accuracy and patient confidence. The study concluded that only five factors affected the physicians' intention to use CDSS: performance expectancy, effort expectancy, facilitating conditions, diagnostic accuracy, and patient confidence. The social influence determinant was reported as an insignificant factor (Aljarboa et al., 2019). Table 2 shows a summary of the studies mentioned above.

Table 1. Definitions of terms

Term	Definition
EHR / EMR	"The Electronic Health Record (EHR) is a longitudinal electronic record of patient health information generated by one or more encounters in any care delivery setting. Included in this information are patient demographics, progress notes, problems, medications, vital signs, past medical history, immunizations, laboratory data and radiology reports. The EHR automates and streamlines the clinician's workflow. The EHR has the ability to generate a complete record of a clinical patient encounter—as well as supporting other care-related activities directly or indirectly via interface—including evidence-based decision support, quality management, and outcomes reporting" (HIMSS, n.d.).
HIS	A hospital information system (HIS) is defined as "a comprehensive, integrated information system designed to manage the administrative, financial and clinical aspects of a hospital. It aims to achieve the best possible support of patient care and administration by electronic data processing" (Ismail et al., 2010, p. 16-24). "It is an information system that performs the function of processing data, information and knowledge in the secondary and tertiary healthcare levels" (Lee et al., 2011, p. 2129–2140)
HIT	Health information technology is "the application of information processing involving both computer hardware and software that deals with the storage, retrieval, sharing, and use of health care information, data, and knowledge for communication and decision making. Applications of health IT include the electronic health record (EHR), the personal health record, computerized physician order entry, and clinical decision support. In addition, health information exchanges are being developed to support sharing of information electronically among health care providers" (Office of the National Coordinator for Health Information Technology, n.d.)
eHealth	eHealth refers to "all forms of electronic health care delivered via information and communication technology channels, ranging from informational, educational, and commercial, to direct services offered by Healthcare organizations, professionals, and consumers themselves" (Oh et al., 2005). E-health is "the use in the health sector, of digital data for clinical; educational and administrative purposes, both at the local site and at a distance" (Geangu et al., 2014, p. 473-482)
CDSS	A clinical decision support system is "a computerized mechanism developed to assist healthcare providers make quality decisions regarding patient treatment and improve clinical management" (Hunt et al. 1998, p. 1339-1346).

Table 2. Summary of Some HIS Studies in SA

Author, Year	Objective	Country	Technology	Study Population	Sample Size	Methodology/Theory	Key Findings
Mohamed and El-Naif (2005)	Evaluate physicians', nurses', and patients' perceptions toward an EMR system	Saudi Arabia	EMR system	Randomly selected physicians, nurses, and patients at a military hospital in Riyadh	Randomly selected physicians (105), nurses (109), and patients (120)	Quantitative (survey and interview)	<ul style="list-style-type: none"> - All respondents were surveyed on the current MRD and the quality of MRD services. However, only physicians were surveyed concerning EMRs. - Physicians had negative perceptions toward conversion from current paper-based MRD to EMR system. - Only 31.3% of physicians believed it was time to move to EMR system. - 68.7% believed that existing MRD was more credible than EMR. - More than 90% of the hospital physicians believed EMRs would add burden (data entry). - More than 80% of the physicians believed EMRs would decrease their productivity.
Bah et al. (2011)	Measure and explore the level and extent of EHR systems in governmental hospitals located in the Eastern Province of SA	Saudi Arabia	EHR system	Hospital IT managers	19 governmental hospitals (19 IT managers)	Quantitative (survey)	<ul style="list-style-type: none"> - Out of 19 hospitals, only 3 used the same EHR system. The implemented system provided 5 main functionalities: chart review, decision support, order entry, documentation, and additional tools. - Key challenges in EHR system implementation were centered on resistance from doctors and nurses and lack of seriousness in inserting the needed inputs to use functions such as patient prescriptions, progress notes, and patient diagnosis.
Aldosari (2012)	Assess radiology users' acceptance of a PACS in the radiology department	Saudi Arabia	HIS-PACS	Consultants, radiologists, residents, technologists, and others who used a PACS in their work in the radiology	89 users of a PACS	Modified TAM	<ul style="list-style-type: none"> - All constructs in the proposed model (i.e., PU, PEU, and change) had a significant effect on radiology staff acceptance and use of PACS.

Aldosari (2014)	Examine the status of EHR system adoption in terms of rate, level, and determinants, in Riyadh as a sample of Saudi Arabia	Saudi Arabia	EHR system	Project managers, medical directors, heads of IT departments, EHR development teams	22 hospitals (16 governmental, 6 private) (280 respondents)	Quantitative (survey)	<ul style="list-style-type: none"> - PU was the most influential factor, explaining 38% of variation in the acceptance level. - EHR adoption rate: out of 22 hospitals, 19 had fully or partially adopted an EHR system. - EHR adoption levels: 3 adoption phases were examined: implementation, maintenance, and improvement. For the implementation phase, the core issue was the low preparation for the needed actions for digitizing the current paper-based record system. For the maintenance phase, the major weakness were software updates and maintaining and updating (CDSS). For the improvement phase, HIS communication and sharing was the main issue. - EHR adoption determinants: 3 primary determinants were explored: hospital size, hospital ownership, and EHR system development team. A positive relationship was reported between hospital size and level of care complexity. For hospital ownership (public or private), public hospitals were more advanced in the system implementation and maintenance phases than private hospitals, but not in the improvement phase.
Almaiman et al. (2014)	Explore HIT implementation and identify the main associated challenges with using eHealth in PHCCs in SA	Saudi Arabia	eHealth	IT personnel in the National Guards for Health Affairs and the Ministry of Health and primary healthcare directors	14 IT personnel and 11 primary healthcare directors from 5 regions of SA (Riyadh, Hail, Arar, Rafha, and Najran)	Interviews and academic search	<ul style="list-style-type: none"> - HIT adoption and use is growing in SA but is still in its early stage. - Most PHCCs in SA maintain the required infrastructure for ICT and the needed IT resources. - Low utilization of HISs and health electronic applications because of system

<p>El Mahalli (2015)</p>	<p>Investigate nurses' adoption and barriers to use EHRs</p>	<p>Saudi Arabia</p>	<p>EHRs</p>	<p>Nurses</p>	<p>185 nurses across three public hospitals in the Eastern Province of SA</p>	<p>Quantitative (survey)</p>	<p>failure, difficulty in using and navigating online system, negative attitude toward using the systems, or work overload.</p> <ul style="list-style-type: none"> - HIS at PHCCs contributed to lower the no-show rate and improve service quality. - Critical challenges for HIS implementation in PHCCs: disparity implementation of HIS in cities and rural areas; majority of PHCCs in SA use EMRs along with paper-based medical records - EMR implementation barriers include policies, organizational technical infrastructure, users' resistance to change, training, costs, and confidentiality of patient information. - Because electronic medical services in Saudi hospitals are not integrated at the local or national levels, there are data quality problems that threaten data security and increase the healthcare costs. - The same EHR system is implemented in the 3 hospitals. - The applied EHRs provide the following functionalities: chart review, decision support, order entry, documentation, communication with other providers, and additional tools. - Underutilization of all EHR functionalities across the systems at the 3 hospitals. - No utilization of any communication features. - No utilization of functionality allowing patients to access parts
--------------------------	--	---------------------	-------------	---------------	---	------------------------------	--

Aljarboa et al. (2019)	Determine the factors that affect the adoption of CDSSs in the Saudi healthcare sector, and identify the challenges of using such a technology	Saudi Arabia	CDSS	Physicians/ doctors	9 physicians	Qualitative, semi-structured interviews, UTAUT	<p>of their health records online.</p> <ul style="list-style-type: none"> - Nurses' barriers to use EHR system (most to least frequently cited): transient loss of access to records if computer crashes or power fails, lack of continuous training/support from IT staff, additional time required for data entry, system hanging up problem, complexity of technology, and lack of customizability to meet users' needs. <p>Constructs were added to UTAUT: diagnostic accuracy and patient confidence.</p> <ul style="list-style-type: none"> - Only 5 factors affected physicians' intention to use CDSS: performance expectancy, effort expectancy, facilitating conditions, diagnostic accuracy, and patient confidence. - Social influence determinant was reported as insignificant. - Studying patients' attitude toward CDSS adoption and acceptance is recommended.
------------------------	--	--------------	------	---------------------	--------------	--	---

As per the literature, HISs contribute in improving healthcare productivity and cost-effectiveness, empowering patients by involving them in healthcare decision making and reducing medical errors (Zhang, 2002). On the other hand, there have been few investigations and studies regarding patients' adoption and acceptance of health IT solutions that require their inputs. Most adoption and acceptance studies focus on hospital staff, which includes physicians, nurses, medical directors, decision makers, laboratory technicians, and pharmacists (Alshahrani et al., 2019).

Considering this article's scope, which focuses on Saudi Arabia, the Ministry of Health in SA has prioritized the digitizing of health records and the development of electronic solutions in the healthcare context (Bah et al., 2011). The Ministry of Health has also made a variety of agreements to smooth the adoption and implementation of EMRs in primary healthcare centers. Nevertheless, the use of EMRs among Saudis is uncommon (Al-Sobhi et al., 2011). It is difficult to track the adoption of EHRs in SA due to limited publications in that area. A review of the 31 currently available publications on eHealth in Saudi Arabia showed that eHealth implementation and adoption is growing. On the other hand, the number of studies is limited and not growing at the same pace (Alsulame et al., 2016). Very few research studies have been conducted to quantify or measure the adoption of such technology (Aldosari, 2014), and none of these studies, to the author's knowledge, has focused on patients as among the HIS users. On this basis, this study aims to answer the following research question: What are the factors influencing patients to accept and use the online services of an EMR system?

3. Method

This section shows the model proposed for the study and the constructs considered. The research is posited on the theoretical background of the TAM. Compared to other models that examine technology adoption, TAM is the

most widely used in the literature (Ahlan & Ahmad, 2014; Ma & Liu, 2004). TAM is a theory that illustrates and helps to predict the impact of a system's usefulness and ease of use on users' intention to accept and use that technology (Davis, 1989). TAM was initially established to investigate the reasons why some users did not use and accept new technologies or systems when they were available to them (Holden & Karsh, 2010). TAM has been broadly used in many HIS studies to depict healthcare providers' behavioral intention to use HISs. Moreover, many researchers have argued that TAM is more applicable than other technology acceptance theories in healthcare settings (Aggelidis & Chatzoglou, 2009; Holden & Karsh, 2010; Yarbrough & Smith, 2007). According to a review by Holden and Karsh (2010), 16 of 20 studies concerning the implementation of health IT for patient care used the TAM or modified TAM, which predicts a significant portion of health IT acceptance and use. Although some studies used UTAUT model as it is the recent one and integrates constructs from different models, a study conducted recently revealed that applying the UTAUT to study the adoption of HIT in developing countries is inadequate and needs to be modified to fit the developing countries context (Bawack et al., 2018). In this study, TAM (Davis, 1989) is used as a theoretical foundation with one more construct from the UTAUT model (Venkatesh et al., 2003). Table 3 and Figure 1 demonstrate the proposed model.

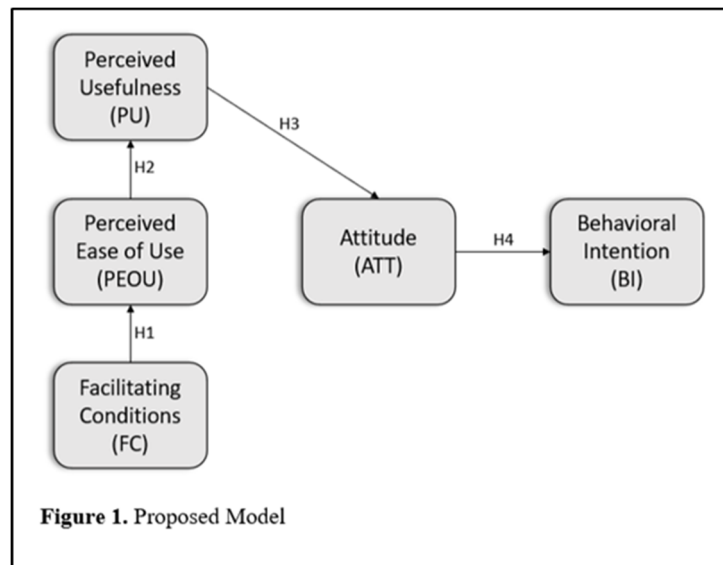
3.1 Study Setting and Participants

The study was conducted in the Royal Commission Medical Center (RCMC) at Yanbu, SA. It is one of the main hospitals in Yanbu. RCMC is a public (governmental) hospital that was established in 1980 with a capacity of 68 beds; it currently has a capacity of over 400 beds.

RCMC has one main center, which is the Occupational Health Care Center, and seven polyclinics. RCMC received local and international accreditation from the Saudi Central Board for Accreditation of Health Care Institutions and the Joint Commission International. RCMC recently implemented an EMR system for managing patients' information, medical history, clinic visit appointments, examination appointments, and other functions. The system has many users, including patients. The targeted population includes RCMC patients. Random sampling was used, and a total of 116 patients responded to a questionnaire.

Table 3. Proposed model constructs and definitions

Construct	Definition	Reference
Perceived usefulness (PU)	"The degree to which a person believes that using a particular system would enhance his or her job performance."	Davis (1989)
Perceived ease of use (PEOU)	"The degree to which a person believes that using a particular system would be free of effort."	Davis (1989)
Attitude toward behavior (ATT)	"An individual's positive or negative feelings (evaluative effect) about performing the target behavior."	Fishbein & Ajzen (1975)
Behavioral intention (BI)	"An individual's motivation or willingness to exert effort to perform the target behavior."	Fishbein & Ajzen (1975)
Facilitating conditions (FC)	"The degree to which an individual believes that an organizational and technical infrastructure exists to support the use of the system."	Venkatesh et al. (2003)



Considering the FCs construct of the UTAUT model (Venkatesh et al., 2003), and based on the four core determinants of TAM (PEOU, PU, ATT, and BI) (Davis, 1989), the following hypotheses were formulated:

Hypothesis 1 (H1): Facilitating conditions (e.g., information on the hospital website, skills, knowledge, and availability of technical support) will have a positive effect on the RCMC EMR system perceived ease of use.

Hypothesis 2 (H2): Perceived ease of use of the RCMC EMR system will have a positive effect on the perceived usefulness of the system.

Hypothesis 3 (H3): Perceived usefulness of the RCMC EMR system will have a positive effect on patients' attitudes toward the system.

Hypothesis 4 (H4): Patients' attitudes towards using the RCMC EMR system will have a positive effect on the intention to use the system.

3.2 Data Collection

A structured questionnaire was developed for this study to investigate patients' perceptions of using RCMC's electronic services. The questionnaire was online and written in Arabic and English. It included two sections where a combination of category and scale-ranking questions were used. The response scale was a 5-point Likert-type scale, serving to measure the level of patients' agreement with questions and statements (1-Strongly disagree, 2-Disagree, 3-Neutral, 4-Agree, and 5-Strongly agree).

The first section of the questionnaire aimed to identify the patients' demographic characteristics using three questions inspired by Aldosari et al. (2018). The second part included 18 questions that were based on TAM user acceptance factors: PU, PEOU, ATT, and BI. Also, three questions were based on the FCs factor of the UTAUT model. Table 4 summarizes the items used.

Table 4. Questionnaire items

Construct	Item	Code
Perceived Usefulness (PU)	The electronic health services offered in the website or the app address my needs (book appointment, view lab/radiology results, medical reports, etc.).	PU1
	Using electronic health services saves me time.	PU2
	Using electronic health services makes it easier to get the hospital services.	PU3
	Overall, I find the electronic health services on the website or the app are useful.	PU4
Perceived Ease of Use (PEOU)	Learning to use the electronic health services on the website or the app is easy for me.	PEOU1
	I find it easy to get the electronic health services to do what I want it to do.	PEOU2
	Using the electronic health services on the website or the app is clear and understandable.	PEOU3
	I find the electronic health services to be flexible to interact with.	PEOU4
Facilitating Conditions (FCs)	I have the knowledge necessary to use the electronic health services offered on the website or the app.	FC1
	I think using the electronic health services in the website or the app fits well with the way I like to get health services.	FC2
	A specific person (or group) is available for assistance if I have problems using the electronic health services offered in the website or the app.	FC3
Attitude (ATT)	Using electronic health services is a good idea.	ATT1
	I will be satisfied in using the electronic health services.	ATT2
	I think it is valuable to use electronic medical services.	ATT3
	Using electronic health services is favorable to me.	ATT4
Behavioral Intention (BI)	I intend to use the electronic health services in the next months.	BI1
	I predict I would use the electronic health services in the next months.	BI2
	I plan to use the electronic health services in the next months.	BI3

All questions in the online questionnaire were set to be required for submission; therefore, there was no missing data among the 116 responses. For the sample characteristics, there was a higher proportion of female respondents (66%) than male respondents (34%). More than half of the participants belonged to the age group of 20–29 years old (57%). The second-highest age group of the participants was 30–39 (18%), followed by 40–49 (10%), and patients who were 50–59 and over 60 represented 15% of the sample. Among the participants who had experienced using computers, 28% had used computers for 6–10 years, followed by 11–15 years (22%) and 16–20 years (19%). Only a small minority (4%) had used computers for 21–25 years. Table 5 shows the study participants' characteristics.

Table 5. Study participants' characteristics

Characteristic	Frequency	Percentage %
Gender (N = 116)		
Male	39	34%
Female	77	66%
Age (Years) (N = 116)		
20–29	66	57%
30–39	21	18%
40–49	12	10%
50–59	10	9%
60+	7	6%
Duration of computer usage (Years) (N = 116)		
Less than 5 years	14	12%
6–10 years	32	28%
11–15 years	26	22%
16–20 years	22	19%
21–25 years	5	4%
more than 25 years	17	15%

4. Analysis and Results

For the study model analysis, partial least squares-based structural equation modelling was performed for the data analysis using SmartPLS version 3.3.2. Two-step analysis was applied: measurement model and structural model analysis.

4.1 Testing the Measurement Model

Measurement model assessment aims to evaluate the reliability and validity of a proposed model's constructs, which include both reflective and formative measures. For the current study, reflective constructs, factor loadings, composite reliability (CR), and average variance extracted (AVE) were applied to evaluate the convergent validity. As Table 6 shows, all item loadings were at more than 0.7, which exceeded the recommended value of 0.5. The item composite reliability ranged from 0.889 to 0.957, which exceeded the recommended value of 0.7. For the AVE, the items' values ranged from 0.668 to 0.882, which exceeded the recommended value of 0.5.

Table 6. Reflective measurement model

Construct	Item	Loading ^b	AVE ^{a,c}	CR ^{a,d}
Perceived Ease of Use	PEOU1	0.766	0.668	0.889
	PEOU2	0.869		
	PEOU3	0.781		
Attitude	PEOU4	0.849	0.814	0.946
	ATT1	0.909		
	ATT2	0.854		
	ATT3	0.927		
Behavioral Intention	ATT4	0.917	0.882	0.957
	BI1	0.937		
	BI2	0.931		
	BI3	0.949		

a. CR= composite reliability, AVE= average variance extracted

b. All item loadings > 0.5 indicate indicator reliability (Hulland, 1999)

c. All AVE > 0.5 indicates convergent reliability (Bagozzi & Yi, 1988; Fornell & Larcker (1981))

d. All CR > 0.7 indicates internal consistency (Gefen et al., 2000).

After convergent validity, discriminant validity was tested, which included item cross-loading and the Fornell and Larcker (1981) criterion. For item cross-loading, as Table 7 shows, the loadings on constructs (written in bold) were higher than loadings with other constructs. For the inter-construct correlation test or Fornell and Larcker (1981) criterion, Table 8 shows that the construct square root of the AVE (written in bold) was higher than the correlation with other reflective constructs. Therefore, the reflective measurement model proved the convergent and discriminant validity.

Table 7. Discriminant validity: item cross loading

	PEOU	ATT	BI
PEOU1	0.766	0.393	0.453
PEOU2	0.869	0.382	0.361
PEOU3	0.781	0.245	0.342
PEOU4	0.849	0.319	0.343
ATT1	0.402	0.909	0.569
ATT2	0.271	0.854	0.496
ATT3	0.359	0.927	0.657
ATT4	0.434	0.917	0.618
BI1	0.469	0.644	0.937
BI2	0.416	0.55	0.931
BI3	0.387	0.633	0.949

Table 8. Discriminant validity: fornell and larcker criterion

	PEOU	ATT	BI
PEOU	0.817		
ATT	0.411	0.902	
BI	0.452	0.652	0.939

Note. Diagonal elements are the square roots of the AVE of the latent variables and indicate the highest in any column and row.

For the formative measurement model, item weights and multicollinearity between indicators were tested to validate the formative constructs. First, the significance of item weights was evaluated. As shown in Table 9, there were some items with significant weight, such as PU1 and FC3, but they were not deleted. After that, multicollinearity was examined by the variance inflation factor (VIF). All items' VIFs (Table 9) were within the acceptable range, which is below 5. Therefore, no items were deleted.

Table 9. Formative measurement model

Construct	Item	Weight	T-Value	VIF*
Perceived Usefulness	PU1	-0.026	0.22	1.793
	PU2	0.107	0.704	4.017
Facilitating Condition	PU3	0.313	2.567	3.364
	PU4	0.681	6.434	2.619
	FC1	0.268	2.839	1.143
Attitude	FC2	0.788	8.154	1.458
	FC3	0.149	1.473	1.407

Note. * VIF = variance inflation factor.

4.2 Testing the Structural Model

Table 10. Hypothesis testing

Hyp.	Relationship	Path coefficient	Std error	t-Value	P-Value*	Decision
H1	FC -> PEOU	0.791	0.034	22.332	0.000**	Supported
H2	PEOU -> PU	0.755	0.049	15.485	0.000**	Supported
H3	PU -> ATT	0.479	0.105	4.548	0.000**	Supported
H4	ATT -> BI	0.652	0.084	7.779	0.000**	Supported

Note. * Significance level = 0.05; ** p ≤ 0.001.

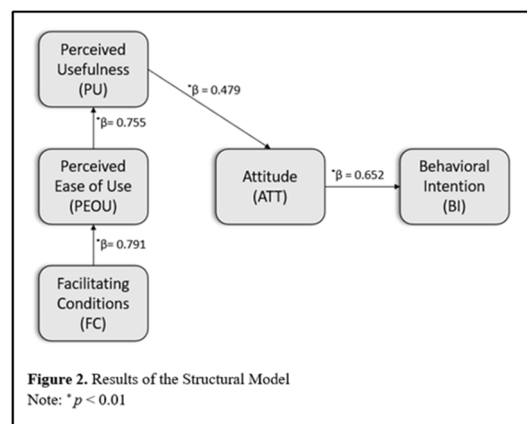


Table 10 and Figure 2 demonstrate the hypothesis testing that was used to assess the structural model. As shown,

facilitating conditions ($\beta = 0.791$, $p < 0.01$) was positively related to perceived ease of use; therefore, H1 was supported. Perceived ease of use was significantly related to perceived usefulness ($\beta = 0.755$, $p < 0.01$), which supported H2. Next is the relationship between perceived usefulness ($\beta = 0.479$, $p < 0.01$) and attitude, which was also positively significant. Thus, H3 was supported. Similarly, the last relationship was verified, in which attitude ($\beta = 0.652$, $p < 0.01$) was positively related to behavioral intention. Therefore, H4 was supported.

4.3 Discussion

This study was developed with the aim of exploring patients' acceptance of the electronic services provided by the RCMC EMR system in Saudi Arabia. A modified TAM was used to investigate patients' acceptance of the EMR system.

First, according to the results showed in the previous section, there was a positive correlation between FC and PEOU (H1). The path coefficient was positive and significant, which implies that a higher level of FCs reduces the difficulty of using such technology. It has been reported in many studies that FCs, such as IT support and training, comprise one of the crucial factors for users' acceptance in the context of healthcare (Aljarboa et al., 2019; Almaiman et al., 2014; El Mashalli, 2015). On the other hand, the impact of FCs on users' PEOU has not been hypothesized frequently in the literature. The finding of the present study goes hand in hand with a very recent study conducted by Tao et al. (2020) to investigate consumers' acceptance of healthcare wearable devices. The results of that study confirmed that FCs affect effort expectancy, which is equivalent to PEOU. In addition, studies by Li et al. (2019) and Tao et al. (2020) have revealed similar findings. Based on the findings of the current study, it is recommended that healthcare providers offer appropriate instructions on how to use a new technology or install an application for it on their websites. Also, IT support should be active and reachable to all patients. Second, PEOU and PU relationship. As reported in technology adoption literature, the foremost factors that affect users' willingness to adopt a system are the system usefulness and ease of use (Davis et al, 1989; Maillet et al, 2015; Venkatesh et al, 2003). There was a positive relationship between PEOU and PU (H2), which implies that healthcare technology, such as EMRs, would be perceived as more useful if it were easy and effortless to use. The same relationship was positive and significant in Tubaishat's (2017) study, which applied TAM to investigate nurses' use behavior of an EHR system. Similarly, many studies have confirmed this relationship from physicians' perspective, such as studies by Alsharo et al. (2019), Chen and Hsiao (2012), and Yarbrough and Smith (2007). In addition, a study conducted by Or et al. (2011) to examine home-care patients' acceptance of a web-based and interactive self-management technology revealed that PEOU did not directly affect the BI, but it had a significant impact on PU. Another example is a study by Dutta et al. (2018), which examined individuals' intention to use one form of HIS, the personal health record. The findings showed that the PEOU-PU relationship was significant. Third, the current study showed that the relationship between PU and ATT was confirmed (H3). Many studies in the healthcare literature have reported the same significant relationship (Alsharo et al., 2019; Dutta et al., 2018; Holden & Karsh, 2010). This indicates that if a hospital or healthcare provider wishes to attain better acceptance of healthcare technologies among the intended users, it is essential to ensure that such technology provides the advantages as expected and improves the healthcare efficiency and effectiveness. Therefore, it is recommended that healthcare providers employ different approaches to enhance the technology's PU, which would enhance patients' attitudes. This could include, for example, sending SMS messages, displaying presentations and short videos in waiting areas, and maintaining official accounts in social media and mobile technologies (Almaiman et al., 2014; Househ et al., 2010; Househ, 2011).

Last is the relationship between ATT and users' BI. Contrary to the findings of Ifinedo (2017), which did not confirm a relationship between nurses' attitudes and their behavioral intention to use HIS at work, in the present study the ATT and BI relationship was confirmed. The effect of physicians' ATT on BI has also been shown to be positively significant in other studies (Alsharo et al., 2019; Dutta et al., 2018).

5. Conclusion

This study aimed at studying patients' perceptions about accepting and using the online services of an EMR system in Saudi Arabia. The study proposed and tested a model that includes constructs from UTAUT and TAM models. The results revealed that facilitating conditions that involved patients' knowledge, skills, and the provided support by the hospital directly influenced the degree of system perceived ease of use, which in turn affected the EMR's perceived usefulness and directly affected patients' attitudes toward using the EMR. In addition, a positive effect was found between attitudes and the behavioral intention to use the EMR. The study analysis confirmed the validity of the proposed model in the context of patients' acceptance of healthcare technologies.

This study makes significant contributions to HIS research because it considers patients as among healthcare systems' users. Most healthcare adoption research has focused on physicians, nurses, and hospital administrators.

Patients have received little attention, especially in Saudi Arabia. To the best of the author's knowledge, this is the first study in the context of HIS/EMR adoption and acceptance from patients' perspectives in Saudi Arabia. On the other hand, the study has several limitations. First, it was limited to 116 patients who were located within the limited geographical context of Saudi Arabia. Different results might be seen in different countries and environments. Second, the proposed and tested model included only five constructs, which might be insufficient for understanding the use behavior of patients. Third, the patients' demographic characteristics were not considered in drawing the study findings. Last, the study questionnaire was only available online, which implied that patients who did not have access to the Internet were not included in the sample.

For future research, more studies are required to explore the factors that affect all HIS users' adoption to overcome the implementation challenges that may hinder the system's success. Investigation of patients' attitudes toward the adoption and acceptance of HIT/HIS is recommended (Aljarboa et al., 2019). In addition, according to Alkabba et al. (2012), the confidentiality of patients' information is ranked among the top three ethical issues for healthcare providers, patients, and their families in SA. Therefore, different constructs that are important to patients could be integrated with the model proposed in this study; these could include data privacy, data quality, system quality, system complexity, and social norms. Also, further research is needed on the impact of patients' demographic characteristics on their adoption behavior—characteristics such as gender, age, computer use experience, and education level.

Abbreviations

SA- Saudi Arabia; HIS- Hospital Information System; EHR- Electronic Health Record ; EMR- Electronic Medical Record; HIT- Health Information Technology; eHealth- Electronic health; CDSS- Clinical Decision Support System; ICT- Information and Communication Technologies; PHCCs- Primary Healthcare Centers; MRD- Medical Records Department ; PACS- Picture Archiving and Communication System; RCMC- Royal Commission Medical Center; TAM- Technology Acceptance Model; UTAUT- Unified Theory of Acceptance and Use of Technology; FC- Facilitating Conditions; PEOU- Perceived Ease of Use; PU- perceived Usefulness; ATT- Attitude; BI- Behavioral Intention; CR- Composite Reliability; AVE- Average Variance Extracted; VIF- Variance Inflation Factor

Declarations

Acknowledgments

I would like to thank the patients who participated in this study for their valuable inputs.

Author's contribution

The author was the sole contributor to the entire study.

Funding

The author was the source of funds for this study.

Ethics approval and consent to participate

Ethical approval was obtained from the research unit of the Yanbu University College for the research process.

The study participants, who are patients, were informed that their participation in the online survey was entirely voluntary, and they may choose to withdraw at any time. Participants' answers are kept confidential, and no personally identifying information would be collected or recorded

Consent for publication

I agree to the publication of this manuscript.

Competing interests

The author declares that she has no competing interests.

References

- Aggelidis, V. P., & Chatzoglou, P. D. (2009) Using a modified technology acceptance model in hospitals. *International Journal of Medical Informatics*, 78(2), 115-126.
- Ahlan, A., & Ahmad, B. (2014). User acceptance of health information technology (HIT) in developing countries: A conceptual model. *Procedia Technology*, 16, 1287-1296.
- Ajzen, I. (1991). The Theory of Planned Behavior. *Organizational Behavior and Human Decision Processes*, 50(2), 179-211. [https://doi.org/10.1016/0749-5978\(91\)90020-T](https://doi.org/10.1016/0749-5978(91)90020-T)

- Aldosari, B. (2012). User acceptance of a picture archiving and communication system (PACS) in a Saudi Arabian hospital radiology department. *BMC Medical Informatics and Decision Making*, 12(1), 44.
- Aldosari, B. (2014). Rates, levels, and determinants of electronic health record system adoption: A study of hospitals in Riyadh, Saudi Arabia. *International Journal of Medical Informatics*, 83(5), 330-342. <https://doi.org/10.1016/j.ijmedinf.2014.01.006>
- Aldosari, B., Al-Mansour, S., Aldosari, H., & Alanazi, A. (2018). Assessment of factors influencing nurses' acceptance of electronic medical record in a Saudi Arabia hospital. *Informatics in Medicine Unlocked*, 10, 82-88.
- Aljarboa, S., Miah, S. J., & Kerr, D. (2019). Perceptions of the adoption of clinical decision support systems in the Saudi healthcare sector. *Proceedings of the 24th Asia-Pacific Decision Science Institute International Conference (APDSI)*. Brisbane, Australia.
- Alkabba, A., Hussein, G., Albar, A., Bahnassy, A., & Qadi, M. (2012). The major medical ethical challenges facing the public and healthcare providers in Saudi Arabia. *Journal of Family and Community Medicine*, 19(1), 1. <https://doi.org/10.4103/2230-8229.94003>
- Almaiman, A., Bahkali, S., Alfrih, S., Househ, M., & El-Metwally, A. (2014). The use of health information technology in Saudi primary healthcare centers. *Studies in Health Technology and Informatics*, 202, 209-212. <https://doi.org/10.3233/978-1-61499-423-7-209>
- Alshahrani, A., Stewart, D., & Maclure, K. (2019). A systematic review of the adoption and acceptance of eHealth in Saudi Arabia: Views of multiple stakeholders. *International Journal of Medical Informatics*, 128, 7-17.
- Alsharo, M., Alnsour, Y., & AlAiad, A. (2019). Exploring the change of attitude among healthcare professionals toward adopting a national health information system: The case of Jordan. *International Journal of Business Information Systems*, 1(1). <https://doi.org/10.1504/ijbis.2020.10019466>
- Al-Sobhi, F., Weerakkody, V., & El-Haddadeh, R. (2011). The relative importance of intermediaries in eGovernment adoption: A study of Saudi Arabia. *Springer Berlin Heidelberg*, 62-74. https://doi.org/10.1007/978-3-642-22878-0_6
- Alsulame, K., Khalifa, M., & Househ, M. (2016). E-health status in Saudi Arabia: A review of current literature. *Health Policy and Technology*, 5(2), 204-210. <https://doi.org/10.1016/j.hlpt.2016.02.005>
- Anastassopoulos, G. C., Danielides, V., Konstantinidis, G., Karakos, A. S., & Anagnostou, E. (2012). A user-centered, object-oriented methodology for developing health information systems: A clinical information system (CIS) example. *Journal of Medical Systems*, 36(2), 437-450.
- Bagozzi, R. P., & Yi, Y. (1988). On the evaluation of structural equation models. *Journal of the Academy of Marketing Science*, 16(1), 74-94.
- Bah, S., Alharthi, H., El Mahalli, A. A., Jabali, A., Al-Qahtani, M., & Al-kahtani, N. (2011). Annual survey on the level and extent of usage of electronic health records in government-related hospitals in Eastern Province, Saudi Arabia. *Perspectives in health information management/AHIMA, American Health Information Management Association*, 8(Fall).
- Bawack, Ransome Epie, and Jean Robert Kala Kamdjoug (2018). Adequacy of UTAUT in clinician adoption of health information systems in developing countries: The case of Cameroon. *International Journal of Medical Informatics*, 109, 15-22.
- Bozaykut, T., Kuyucu, E., & Pinar, I. (2016). Investigating the antecedents of task-technology fit: a field study in Turkish private hospitals. *International Journal of Business Information Systems*, 22(4), 516-529.
- Chaudhry, B., Wang, J., Wu, S., Maglione, M., Mojica, W., & Roth, E. (2006). Systematic review: Impact of health information technology on quality, efficiency, and costs of medical care. *Annals of Internal Medicine*, 144(10), 742. <https://doi.org/10.7326/0003-4819-144-10-200605160-00125>
- Chen, R.-F., & Hsiao, J.-L. (2012). An empirical study of physicians' acceptance of hospital information systems in Taiwan. *Telemedicine and e-Health*, 18(2), 120-125.
- Cresswell, K. M., Bates, D. W. & Sheikh, A. (2013) Ten key considerations for the successful implementation and adoption of large-scale health information technology. *Journal of the American Medical Informatics Association*, 20(e1), e9-e13.
- Davis, F. D. (1989). Perceived usefulness, perceived ease of use, and user acceptance of information technology.

- MIS Quarterly*, 13(3), 319-340. <https://doi.org/10.2307/249008>
- Dutta, B., Peng, M.-H., & Sun, S.-L. (2018). Modeling the adoption of personal health record (PHR) among individual: The effect of healthcare technology self-efficacy and gender concern. *Libyan Journal of Medicine*, 13(1).
- El Mahalli, A. (2015). Electronic health records: Use and barriers among physicians in eastern province of Saudi Arabia. *Saudi Journal for Health Sciences*, 4(1), 32.
- Esmaeilzadeh, P., Sambasivan, M., Kumar, N. & Nezakati, H. (2015) Adoption of clinical decision support systems in a developing country: Antecedents and outcomes of physician's threat to perceived professional autonomy. *International Journal of Medical Informatics*, 84(8), 548-560.
- Fishbein, M., & Ajzen, I. (1975). *Belief, attitude, intention and behavior: An introduction to theory and research*. Reading, MA: Addison-Wesley.
- Fornell, C., & Larcker, D. F. (1981). Evaluating structural equation models with unobservable variables and measurement error. *Journal of Marketing Research*, 18(1), 39-50.
- Fraser, H., Biondich, P., Moodley, D., Choi, S., Mamlin, B. & Szolovits, P. (2005) Implementing electronic medical record systems in developing countries. *Journal of Innovation in Health Informatics*, 13(2), 8395.
- Geangu, I. P., Gărdan, D. A., Orzan, O. A., & Oprescu, A. E. (2014). Medical services consumer protection in the context of eHealth development. *Contemporary Readings in Law and Social Justice*, 6(1), 473-482.
- Gefen, D., Straub, D., & Boudreau, M. C. (2000). Structural equation modeling and regression: Guidelines for research practice. *Communications of the Association for Information Systems*, 4(1), 7.
- Gell G., & Gitter T. (2008) Hospital information system/electronic health record (HIS/HER) and clinical research. In P. J. J. Welfens & E. Walther-Klaus (Eds.), *Digital Excellence*. Springer.
- HIMSS. (n.d.). The electronic health record (EHR). Retrieved from <https://www.himss.org/electronic-health-records>
- Holden, R. J., & Karsh, B.-T. (2010) The technology acceptance model: Its past and its future in health care. *Journal of Biomedical Informatics*, 43(1), 159-172.
- Househ, M. (2011). Sharing Sensitive Personal Health Information through Facebook: The Unintended Consequences. *Studies in health technology and informatics*, 169, 616-20.
- Househ, M., Al-Tuwaijri, M., & Al-Dosari, B. (2010). Establishing an electronic health center of research excellence (E-CoRE) within the Kingdom of Saudi Arabia. *Journal of Health Informatics in Developing Countries*, 4(1), 42-46.
- Hu, P. J., Chau, P. Y., Sheng, O. R. L., & Tam, K. Y. (1999). Examining the technology acceptance model using physician acceptance of telemedicine technology. *Journal of Management Information Systems*, 16(2), 91-112. <https://doi.org/10.1080/07421222.1999.11518247>
- Hulland, J. (1999). Use of partial least squares (PLS) in strategic management research: A review of four recent studies. *Strategic Management Journal*, 20(2), 195-204.
- Hunt, D. L., Haynes, R. B., Hanna, S. E., & Smith, K. (1998). Effects of computer-based clinical decision support systems on physician performance and patient Outcomes: A systematic review, *JAMA*, 280(15), 1339-1346.
- Ifinedo, P. (2017). Empirical study of Nova Scotia nurses' adoption of healthcare information systems: Implications for management and policy-making. *International Journal of Health Policy and Management*, 7(4), 317-327.
- Ismail, A., Jamil, A., Rahman,, A., Abu Bakar, J., Saad, N., & Saadi, H. (2010). The implementation of hospital information system (HIS) in tertiary hospitals in Malaysia a qualitative study. *Malaysian Journal of Public Health Medicine*, 10(2), 16-24.
- Khalifa, M. (2017). Perceived benefits of implementing and using hospital information systems and electronic medical records. In *ICIMTH* (pp. 165-168).
- Kijsanayotin, B., Pannarunothai, S. & Speedie, S. M. (2009) Factors influencing health information technology adoption in Thailand's community health centers: Applying the UTAUT model. *International Journal of Medical Informatics*, 78(6), 404-416.

- Kilsdonk E., Peute, L., Knijnenburg, S., & Jaspers, M. (2010) Factors known to influence acceptance of clinical decision support systems. *Studies in Health Technology and Informatics*, 169, 150-154.
- Lee, H., Ramayah, T., & Zakaria, N. (2011). External factors in hospital information system (HIS) adoption model: A case on Malaysia. *Journal of Medical Systems*, 36(4), 2129-2140.
- Li, J., Ma, Q., Chan, A. H., & Man, S. (2019). Health monitoring through wearable technologies for older adults: Smart wearables acceptance model. *Applied Ergonomics*, 75, 162-169.
- Ma, Q., & Liu, L. (2004). The technology acceptance model: A meta analysis of empirical findings. *Journal of Organizational and End User Computing (JOEUC)*, 16(1), 59-72.
- Maillet, É., Mathieu, L. & Sicotte, C. (2015) Modeling factors explaining the acceptance, actual use and satisfaction of nurses using an Electronic Patient Record in acute care settings: An extension of the UTAUT. *International Journal of Medical Informatics*, 84(1), 36-47.
- Menachemi, N., Burke, D., & Ayers, D. (2004). Factors affecting the adoption of telemedicine—A multiple adopter perspective. *Journal of Medical Systems*, 28(6), 617-632.
- Meyers, S. (2003). ‘Concierge’ medicine. Who really pays for gold standard access to doctors? *Trustee: The Journal for Hospital Governing Boards*, 56(1), 4-12.
- Mohamed, B. A., & El-Naif, M. (2005). Physicians’, nurses’ and patients’ perception with hospital medical records at a military hospital in Riyadh, Saudi Arabia. *Journal of Family Community Medicine*, 12(1), 49.
- Moore, G. C., & Benbasat, I. (1991). Development of an Instrument to Measure the Perceptions of Adopting an Information Technology Innovation. *Information Systems Research*, 2(3), 192-222. <https://doi.org/10.1287/isre.2.3.192>
- Office of the National Coordinator for Health Information Technology. (n.d.). Glossary. Retrieved from <https://www.healthit.gov/unintended-consequences/content/glossary.html#h>
- Oh, H., Jadad, A., Rizo, C., Enkin, M., Powell, J., & Pagliari, C. (2005). What is eHealth (3): A systematic review of published definitions. *Journal of Medical Internet Research*, 7(1). <https://doi.org/10.2196/jmir.7.1.e1>
- Or, C. K. L., Karsh, B.-T., Severtson, D. J., Burke, L. J., Brown, R. L., & Brennan, P. F. (2011). Factors affecting home care patients acceptance of a web-based interactive self-management technology. *Journal of the American Medical Informatics Association*, 18(1), 51-59.
- Rogers, C. R. (1962). The interpersonal relationship. *Harvard educational review*, 32(4), 416-429.
- Rogers, E. M. (2010). *Diffusion of innovations*. Simon and Schuster.
- Spetz, J., Gates, M. & Jones, C. B. (2014) Internationally educated nurses in the United States: Their origins and roles. *Nursing Outlook*, 62(1), 8-15.
- Tao, D., Wang, T., Wang, T., Zhang, T., Zhang, X., & Qu, X. (2020). A systematic review and meta-analysis of user acceptance of consumer-oriented health information technologies. *Computers in Human Behavior*, 104, 106147.
- Taylor, S., & Todd, P. A. (1995). Understanding information technology usage: A test of competing models. *Information Systems Research*, 6, 144-176. <https://doi.org/10.1287/isre.6.2.144>
- Tubaishat, A. (2017). Perceived usefulness and perceived ease of use of electronic health records among nurses: Application of technology acceptance model. *Informatics for Health and Social Care*, 43(4), 379-389.
- Venkatesh, V., Morris, M., Davis, G., & Davis, F. (2003). User acceptance of information technology: Toward a unified view. *MIS Quarterly*, 27, 425-478. <https://doi.org/10.2307/30036540>
- Williams, F. & Boren, S. (2008) The role of the electronic medical record (EMR) in care delivery development in developing countries: A systematic review. *Journal of Innovation in Health Informatics*, 16(2), 139-145.
- Yarbrough, A. K., & Smith, T. B. (2007) Technology acceptance among physicians: A new take on TAM. *Medical Care Research and Review*, 64(6), 650-672.
- Zakaria, N., Affendi, S., & Zakaria, N. (2010). Managing ICT in healthcare organization: culture, challenges, and issues of technology adoption and implementation. *Health Information Systems: Concepts, Methodologies, Tools, and Applications* (pp. 1357-1372). IGI Global.
- Zhang, J. (2002). Medical error: Is the solution medical or cognitive? *Journal of the American Medical Informatics Association*, 9(90061), 75S-77.

Zikos, D., & Delellis, N. (2018). CDSS-RM: A clinical decision support system reference model. *BMC Medical Research Methodology*, 18(1), 137.

Copyrights

Copyright for this article is retained by the author(s), with first publication rights granted to the journal.

This is an open-access article distributed under the terms and conditions of the Creative Commons Attribution license (<http://creativecommons.org/licenses/by/4.0/>).